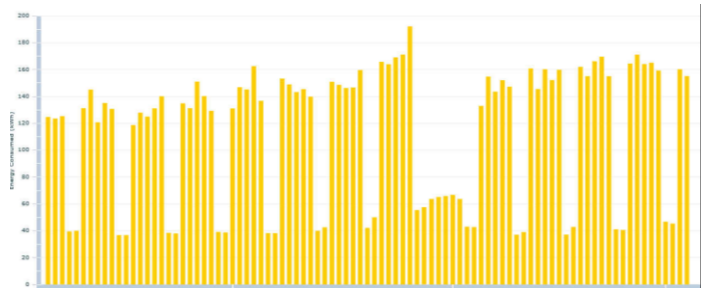
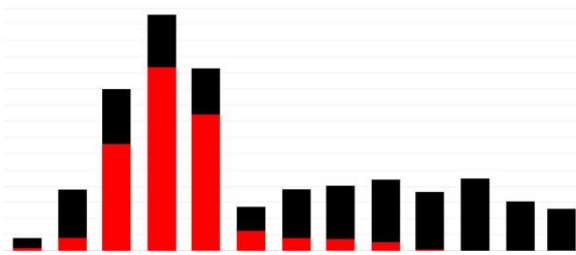


# School Energy Saving Support

## Thermal imaging surveys and Smart-meter support 2021/22

Until Easter 2022, we can help you find out how much energy your school is using - and how much it is losing! We can then help you track down where the heat-loss trouble-spots are.

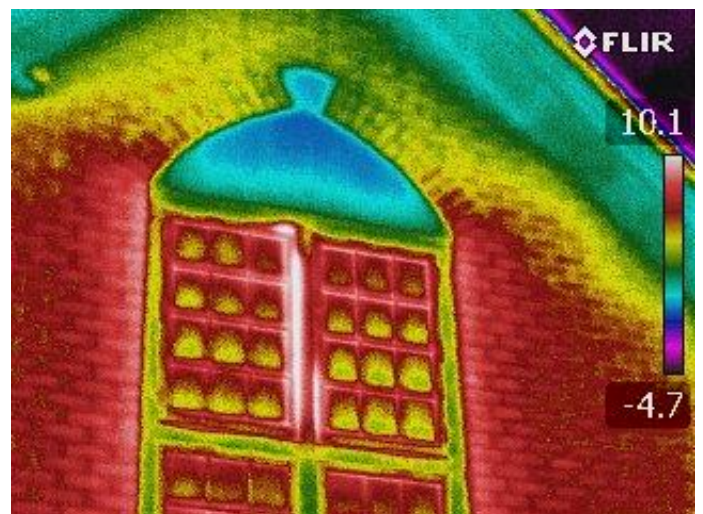
**Smart-meter data** : Analysis of your smart-meter data can rapidly track down where energy is being wasted. For example, heating timers may not be correctly set and are coming on too early or staying on too late. In some cases, large savings can be made extremely quickly!



If your school would like support with accessing and analysing your smart-meter data, we would be happy to help.

**Thermal imaging of your school:** The thermal-imaging camera is a powerful tool that can instantly identify areas where energy is being lost from your school. There may be insufficient roof insulation, or old and draughty wooden windows and doors could be allowing heat to escape out of your school – heat that you are paying for! Tackling these problem areas where heat is leaking out can often lead to significant energy savings.

If you would like a thermal-imaging survey of your school buildings to check where heat is escaping, we can provide this for you.



If you would like a thermal-imaging survey of your school buildings and/or support with analysing your smart-meter data, please get in touch using our [Contact Form here on the website.](#)